

**RFP #21-980369**

# FLORIDA ELECTRIC TRANSIT BUSES WITH CHARGING AND ASSOCIATED EQUIPMENT

**PINELLAS SUNCOAST TRANSIT AUTHORITY**

September 23, 2021



## SECTION 2 — PRICE PROPOSAL

**SUBMITTED BY:**  
BYD Coach & Bus LLC.  
1800 South Figueroa Street  
Los Angeles, CA 90015

**BYD CONTACT PERSONNEL:**  
Patrick Duan, Senior VP of Operations  
P: 213.880.8597 E: patrick.duan@byd.com

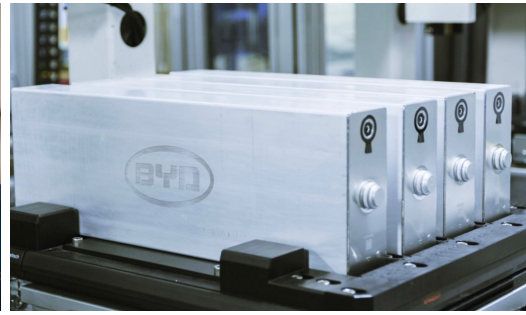
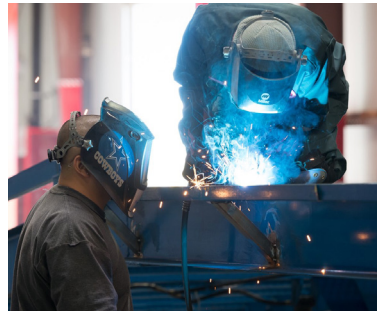
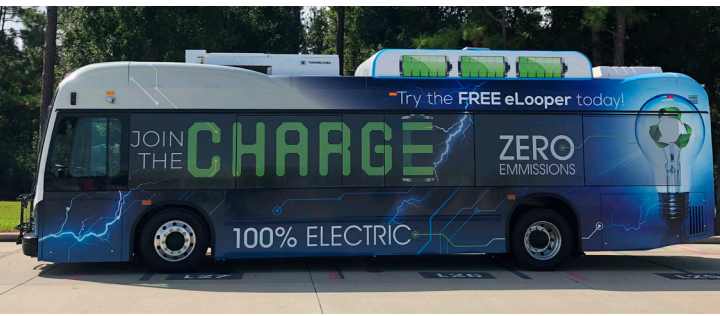
John Hatch, Southeast Regional Sales Manager,  
P: 407.729.0406 E: john.hatch@byd.com

Maria Mendoza, Director of Bids and Grants  
P: 213.356.3660 E: maria.mendoza1@byd.com

**SUBMITTED TO:**  
Pinellas Suncoast Transit  
Authority  
Attn: Alvin R. Burns Jr., Director  
of Procurement  
3201 Scherer Drive  
St. Petersburg, FL 33716

THIS PROPOSAL INCLUDES INFORMATION THAT SHALL NOT BE DISCLOSED OUTSIDE OF PINELLAS SUNCOAST TRANSIT AUTHORITY. AND SHALL NOT BE DUPLICATED, USED, OR DISCLOSED, IN WHOLE OR IN PART, FOR ANY PURPOSE OTHER THAN TO EVALUATE THIS PROPOSAL. IF, HOWEVER, A CONTRACT IS AWARDED TO THIS BYD AS A RESULT OF, OR IN CONNECTION WITH, THE SUBMISSION OF THIS INFORMATION, PINELLAS SUNCOAST TRANSIT AUTHORITY SHALL HAVE THE RIGHT TO DUPLICATE, USE, OR DISCLOSE THE INFORMATION TO THE EXTENT PROVIDED IN THE RESULTING CONTRACT. THIS RESTRICTION DOES NOT LIMIT PINELLAS SUNCOAST TRANSIT AUTHORITY'S RIGHT TO USE INFORMATION CONTAINED IN THIS INFORMATION IF IT IS OBTAINED FROM ANOTHER SOURCE WITHOUT RESTRICTION. THE INFORMATION SUBJECT TO THIS RESTRICTION IS CONTAINED ON ALL PAGES THAT FOLLOW.

## TABLE OF CONTENTS



**LETTER OF TRANSMITTAL**

**PRICING SCHEDULE**

**PSTA Pricing Schedule**

---

# LETTER OF TRANSMITTAL

---





BYD Coach & Bus LLC | 213.748.3980  
1800 South Figueroa Street | 213.373.9801 fax  
Los Angeles, CA 90015 | [www.byd.com](http://www.byd.com)

September 20, 2021

Pinellas Suncoast Transit Authority  
Attn: Alvin R. Burns Jr., Director of Procurement  
3201 Scherer Drive  
St. Petersburg, FL 33716

**RE: RFP No. 21-980369 – Florida Electric Transit Buses and Charging and Associated Equipment**

Dear Mr. Burns,

BYD Coach & Bus LLC. (BYD) is pleased to submit the enclosed proposal in response to Pinellas Suncoast Transit Authority's (PSTA) Request for Proposals (RFP) No. 21-980369 – Florida Electric Transit Buses and Charging and Associated Equipment. BYD stands for "**Build Your Dreams**," and we are a proud American manufacturer and innovator producing 100% Battery Electric Buses. We are dedicated to reducing overall emissions and environmental pollution.

We accept the RFP terms without exception unless specifically indicated within our technical proposal. We submit this letter in response to your RFP as a "Letter of Transmittal" and include the following information for your convenience:

- |                              |   |
|------------------------------|---|
| 1. Contact Information       | BYD Coach & Bus LLC<br>1800 South Figueroa Street<br>Los Angeles, CA 90015<br><a href="mailto:bids.na@byd.com">bids.na@byd.com</a>                |
| 2. Authorized Contact Person | Patrick Duan, Senior Vice President of Operations<br>Phone: 213.880.8597<br>Email: <a href="mailto:patrick.duan@byd.com">patrick.duan@byd.com</a> |
| 3. Point of Contact          | John Hatch, Southeast Regional Sales Manager<br>Phone: 407.729.0406<br>Email: <a href="mailto:john.hatch@byd.com">john.hatch@byd.com</a>          |

This letter of transmittal is signed by Patrick Duan, Senior Vice President of Operations, who is authorized to bind BYD to terms of the proposal. We are confident that you will find our response to your RFP both thorough and fully responsive. We look forward to your bid opening and favorable response.

Sincerely,

Patrick Duan  
Senior Vice President of Operations



# PRICING SCHEDULE

---



# PSTA PRICING SCHEDULE

---

**SCHEDULE**

CAUTION: A false statement in any offer submitted to PSTA may be a criminal OFFENSE.

NOTE: For Invitations for Bids the terms "Offer" and "Offeror" shall mean "Bid" and "Bidder", respectively; and for Request for Proposals the terms "Bid" and "Bidder" shall mean "Offer" and "Offeror", respectively, in this solicitation and any associated exhibits.

The rates include all costs that the offeror(s) intends to recover, such as, but not limited to: supervision, labor, equipment, materials, vehicle licensing, vehicle title, pick-up, financing, carrying charges, and all other such charges to accommodate the services and requirements. No price adjustments will be made, unless specifically provided for by an additional provision included in this contract.

**PRICING**

Line Item	Description	Part #	QTY	Yr1	Yr2	Yr3	Yr 4	Yr5
1	Cost of (1) 29FT/30FT, low floor, all electric bus, per the specifications	BASE BUS	1	\$ 630,000.00	PPI Pricing*	PPI Pricing*	PPI Pricing*	PPI Pricing*
2	Cost of (1) 35FT, low floor, all electric bus, per the specifications	BASE BUS	1	\$ 750,000.00	PPI Pricing*	PPI Pricing*	PPI Pricing*	PPI Pricing*
3	Cost of (1) 40FT, low floor, all electric bus, per the specifications	BASE BUS	1	\$ 730,000.00	PPI Pricing*	PPI Pricing*	PPI Pricing*	PPI Pricing*
4	Cost of (1) 45FT, all electric bus, per the specifications	BASE BUS	1	\$ 950,000.00	PPI Pricing*	PPI Pricing*	PPI Pricing*	PPI Pricing*
5	Cost of (1) 60FT (articulated), low floor, all electric bus, per the specifications	BASE BUS	1	\$ 1,200,000.00	PPI Pricing*	PPI Pricing*	PPI Pricing*	PPI Pricing*
6	Cost of (1) Depot Charger	BYD: 80kW AC Charger	1	\$ 20,000.00	\$ 20,000.00	\$ 20,000.00	PPI Pricing*	PPI Pricing*
7	Cost of (1) Depot Charger	Heliox: FAST DC/OC 175kW UL Charger Equipmen Only (Pillar, SAT, and Installation Excluded)	1	\$ 65,042.85	Quote	Quote	Quote	Quote
8	Cost of (1) Depot Charger	ABB: 1 x HVC-150C – 150kW UL BAA Cabinets (480 VAC Input) 1 x Depot Charge Boxes UL BAA 7m dispenser Equipmen Only	1	\$ 118,125.70	Quote	Quote	Quote	Quote
9	Cost of (1) Depot Charger	Siemens: SICHARGE UC200 (150kW) with one remote dispenser – CCS1 Equipmen Only	1	\$ 86,250.00	Quote	Quote	Quote	Quote
10	Cost of (1) On Route Charger		1					
11	Cost of (1) On Route Charger	WAVE: 250kW Primary In Route Charging Includes a single pad capable of dispensing 250kW directly to the battery and associated all in-ground equipment.	1	\$ 264,000.00	Quote	Quote	Quote	Quote
12	Cost of (1) On Route Charger	WAVE: 250kW Secondary Includes the 250kW receiver unit attached to the underside of the vehicle, all vehicle-side equipment on Wave-ready vehicle.	1	\$ 96,400.00	Quote	Quote	Quote	Quote
13	Cost of (1) On Route Charger	Momentum Dynamics: MD WPT5 Wireless 300kW Primary System Equipmen Only	1	\$ 220,000.00	Quote	Quote	Quote	Quote
14	Cost of (1) On Route Charger	Momentum Dynamics: MD WPT5 Wireless 300kW Vehicle System Equipmen Only	1	\$ 49,200.00	Quote	Quote	Quote	Quote
15	ADVERTISING FRAMES	None	1	Standard				
16	ADVERTISING FRAMES	Advertising Frame - Interior 22" X 21",RH Load, Open Back, Clear Aluminum Finish	1	\$ 267.32	Quote	Quote	Quote	Quote
17	ADVERTISING FRAMES	(1) Information Board (#15-55401-000)	1	\$ 174.10	Quote	Quote	Quote	Quote
18	ADVERTISING FRAMES		1					
19	ADVERTISING FRAMES		1					
20	ADVERTISING FRAMES		1					
21	AIR SYSTEM	Bendix AD9 Air Dryer	1	N/A				
22	AIR SYSTEM	Shop Air Connection ( Milton S790)	1	\$ 91.00	Quote	Quote	Quote	Quote

Line Item	Description	Part #	QTY	Yr1	Yr2	Yr3	Yr 4	Yr5
23	AIR SYSTEM	Kingston Auto Drain Valve at Ping Tanks	1	\$ 39.00	Quote	Quote	Quote	Quote
24	AIR SYSTEM	Bendix ADIP , Heated, Air Dryer	1	N/A				
25	AIR SYSTEM	Bendix Puraguard Air / Oil Separator	1	N/A				
26	AIR SYSTEM	Chicago Rawhide Dual Turbo 2000 Air Dryer	1	N/A				
27	AIR SYSTEM	Graham White Sludge Braker QBA15 Air Dryer	1	N/A				
28	AIR SYSTEM	Graham White Sludge Braker QBA60 Air Dryer	1	N/A				
29	AIR SYSTEM	Hallex Consep Moisture Ejector, Heated, at Air Dryer	1	N/A				
30	AIR SYSTEM	SKF, HCT 2000 Duraguard, 24V Heated, Filtration Plus Air Dryer	1	N/A				
31	AIR SYSTEM	SKF, HCT 2000 Duraguard Air Dryer	1	N/A				
32	AIR SYSTEM	Wabco SS 1800, Heated, Air Dryer	1	N/A				
33	AIR SYSTEM	Shop Air Connection ( Milton 770)	1	\$ 91.00	Quote	Quote	Quote	Quote
34	AIR SYSTEM	Shop Air Connection (Milton 727)	1	\$ 39.00	Quote	Quote	Quote	Quote
35	AIR SYSTEM	Bendix ADIS Air Dryer	1	Standard				
36	AIR SYSTEM		1					
37	AIR SYSTEM		1					
38	AIR SYSTEM		1					
39	AIR SYSTEM		1					
40	AIR SYSTEM		1					
41	AIR SYSTEM		1					
42	AUTOMATIC PASSENGER COUNTER	UTA APC Sensors, Cabling, CPU Only (Integrated w/ ITS)	1	\$ 7,981.49	Quote	Quote	Quote	Quote
43	AUTOMATIC PASSENGER COUNTER	UTA Automatic Passenger Counter System with GPS, WLAN Capabilities	1	\$ 7,190.00	Quote	Quote	Quote	Quote
44	AUTOMATIC PASSENGER COUNTER	UTA Automatic Passenger Counter System with GPS, WLAN Capabilities (without APC software & Wi-Fi data transfer	1	\$ 8,514.40	Quote	Quote	Quote	Quote
45	AUTOMATIC PASSENGER COUNTER	Clever Devices CleverCount System	1	\$ 8,330.60	Quote	Quote	Quote	Quote
46	AUTOMATIC PASSENGER COUNTER		1					
47	AUTOMATIC PASSENGER COUNTER		1					
48	AXLES & SEALS	Stud Piloted Wheels and Axles w/ Oil Seals	1	N/A				
49	AXLES & SEALS	Synthetic 75W90 Gear Oil	1	N/A				
50	AXLES & SEALS	Hub Piloted Wheels and Axles w/ Grease Seals	1	Standard				
51	AXLES & SEALS	Hub Piloted Wheels, Axles with Oil Seals	1	Standard				
52	AXLES & SEALS	Stud Piloted Wheels and Axles w/ Grease Seals	1	N/A				
53	AXLES & SEALS	Rear Axle Oil Drain Plug--Magnetic Internal Hex Head Plug	1	Standard				
54	AXLES & SEALS	BYD Recommend Shell SAE 80W-90 GL-5 1QT	1	\$ 14.30	Quote	Quote	Quote	Quote
55	AXLES & SEALS	BYD Recommend FUCHS 80W-90 GL-5 1L	1	\$ 16.90	Quote	Quote	Quote	Quote
56	AXLES & SEALS	BYD Recommend Total SAE 75W-90 GL-5 1L	1	\$ 12.00	Quote	Quote	Quote	Quote
57	BATTERIES	(2) DEKA 8D Side or Top Post Connections	1	\$ 31.20	Quote	Quote	Quote	Quote
58	BATTERIES	Anderson 350 Jump Start Connector (Front & Rear)	1	\$ 52.00	Quote	Quote	Quote	Quote
59	BATTERIES	Group 31 Batteries	1	Standard				
60	BATTERIES	Anderson 350 Jump Start Connector (Each)	1	\$ 26.00	Quote	Quote	Quote	Quote
61	BATTERIES	Anderson 350 Jump Start Delete	1	Standard				
62	BATTERIES		1					
63	BATTERIES		1					
64	BATTERIES		1					
65	BIKE RACKS	Sportworks DL2, 2-Position, Stainless Steel	1	\$ 1,193.97				
66	BIKE RACKS	Bike Rack Deployed Indicator Lamp on Driver's Dash	1	\$ 35.00	\$ 35.00	Quote	Quote	Quote
67	BIKE RACKS	Sportworks APEX 2, 2-Position, Stainless Steel	1	\$ 1,190.01	\$ 1,190.01	Quote	Quote	Quote
68	BIKE RACKS	Sportworks APEX 2, 2-Position, Powder Coated	1	\$ 1,170.21	\$ 1,170.21	Quote	Quote	Quote
69	BIKE RACKS	Sportworks DL2, 2-Position, Powder Coated	1	\$ 872.22	\$ 872.22	Quote	Quote	Quote
70	BIKE RACKS	Sportworks APEX3, 3-Position, Stainless Steel	1	\$ 1,503.84	\$ 1,503.84	Quote	Quote	Quote



Line Item	Description	Part #	QTY	Yr1	Yr2	Yr3	Yr 4	Yr5
71	BIKE RACKS	Sportworks APEX 3, 3-Position, Powder Coated	1	\$ 1,407.81	\$ 1,407.81	Quote	Quote	Quote
72	BIKE RACKS	Sportworks Trilogy (DL3), 3-Position, Stainless Steel	1	\$ 1,935.48	\$ 1,935.48	Quote	Quote	Quote
73	BIKE RACKS	Sportworks Trilogy (DL3), 3-Position, Powder Coated	1	\$ 1,419.69	\$ 1,419.69	Quote	Quote	Quote
74	BIKE RACKS	Sportworks Pivot Plate Only	1	\$ 230.04	Quote	Quote	Quote	Quote
75	BIKE RACKS	Sportworks Mounting Brackets Only	1	\$ 131.76	Quote	Quote	Quote	Quote
76	BIKE RACKS	Byk-Rak, 2-Position, Stainless Steel	1	\$ 949.32	Quote	Quote	Quote	Quote
77	BIKE RACKS	Byk-Rak, 2-Position, Powder Coated	1	\$ 624.24	Quote	Quote	Quote	Quote
78	BIKE RACKS	Byk-Rak, 3-Position, Stainless Steel	1	\$ 1,208.52	Quote	Quote	Quote	Quote
79	BIKE RACKS	Byk-Rak, 3-Position, Powder Coated	1	\$ 1,208.52	Quote	Quote	Quote	Quote
80	BIKE RACKS	Byk-Rak Pivot Plate Only	1	\$ 230.04	Quote	Quote	Quote	Quote
81	BIKE RACKS	Byk-Rak-Mounting Brackets Only	1	\$ 131.76	Quote	Quote	Quote	Quote
82	BIKE RACKS		1					
83	BIKE RACKS	Notes: all bike racks need to be purchased with pivot plate and brackets	1					
84	BIKE RACKS		1					
85	BIKE RACKS		1					
86	BIKE RACKS		1					
87	BIKE RACKS		1					
88	BIKE RACKS		1					
89	BIKE RACKS		1					
90	BRAKES	MGM E-Stroke Brake Wear Monitoring System	1	N/A				
91	BRAKES	Four Wheel Disc Brakes with ABS	1	Standard				
92	BRAKES		1					
93	BRAKES		1					
94	COMMUNICATIONS SYSTEM	DC Power Filter for Radio Wiring	1	Quote				
95	COMMUNICATIONS SYSTEM	Power Circuit (Route to RH Dash & Electrical Equipment Box) Roof Mount RF/GPS/Cellular Antenna	1	Quote				
96	COMMUNICATIONS SYSTEM	Motorola APX 4500	1	\$ 1,162.50	Quote	Quote	Quote	Quote
97	COMMUNICATIONS SYSTEM	Motorola APX 6500	1	\$ 1,266.00	Quote	Quote	Quote	Quote
98	COMMUNICATIONS SYSTEM	Harris XG-25M	1	\$ 1,243.00	Quote	Quote	Quote	Quote
99	COMMUNICATIONS SYSTEM	Antenna Specialist ASP 572 Antenna	1	\$ 110.96	Quote	Quote	Quote	Quote
100	COMMUNICATIONS SYSTEM	Antenna Specialist ASP 931 Antenna	1	\$ 89.28	Quote	Quote	Quote	Quote
101	COMMUNICATIONS SYSTEM	Antenna Specialist ASP 930T Antenna with RG58 coax cable and TNC connector	1	\$ 71.50	Quote	Quote	Quote	Quote
102	COMMUNICATIONS SYSTEM	GPS Antenna (Trimble 502 Model 18334)	1	\$ 71.50	Quote	Quote	Quote	Quote
103	COMMUNICATIONS SYSTEM		1					
104	COMMUNICATIONS SYSTEM		1					
105	COMMUNICATIONS SYSTEM		1					
106	COMMUNICATIONS SYSTEM		1					
107	COMMUNICATIONS SYSTEM		1					
108	DESTINATION SIGNS	Hanover 100% White LED Sign (17 x 160)--Front ,Side, Rear	1	\$ 2,308.50	Quote	Quote	Quote	Quote
109	DESTINATION SIGNS	Hanover 100% Amber LED Sign (17 x 160)--Front ,Side, Rear	1	\$ 1,808.00	Quote	Quote	Quote	Quote
110	DESTINATION SIGNS	Hanover 100% Full Color LED Sign (17 x 160)--Front ,Side, Rear	1	\$ 4,767.00	Quote	Quote	Quote	Quote
111	DESTINATION SIGNS	Hanover--Add Front Run Sign--White LED	1	\$ 2,365.00	Quote	Quote	Quote	Quote
112	DESTINATION SIGNS	Hanover--Add Front Run Sign--Amber LED	1	\$ 2,046.00	Quote	Quote	Quote	Quote
113	DESTINATION SIGNS	Hanover--Add Front Run Sign--Color LED	1	\$ 3,245.00	Quote	Quote	Quote	Quote
114	DESTINATION SIGNS	Hanover--Delete Rear Sign	1					
115	DESTINATION SIGNS	Hanover Program Software	1	\$ 5,500.00	Quote	Quote	Quote	Quote
116	DESTINATION SIGNS	TwinVision Smart Series 3 100% Silver LED Sign (16 X 160)-- Front, Side, and Rear	1	\$ 2,308.50	Quote	Quote	Quote	Quote
117	DESTINATION SIGNS	TwinVision Smart Series 3 100% Amber LED Sign (16 x 160)--Front, Side, and Rear	1	\$ 2,572.50	Quote	Quote	Quote	Quote
118	DESTINATION SIGNS	Luminator Titan Silver Series LED Sign (24 X 200)--Front, Side, and Rear	1	\$ 2,047.80	Quote	Quote	Quote	Quote

Line Item	Description	Part #	QTY	Yr1	Yr2	Yr3	Yr 4	Yr5
119	DESTINATION SIGNS	Luminator Titan Amber Series Sign (24 x 200)--Front, Side, and Rear	1	\$ 2,030.20	Quote	Quote	Quote	Quote
120	DESTINATION SIGNS	Luminator GEN 4 Horizon 100% Silver LED Sign (16 x 160)--Front, Side , and Rear	1	\$ 3,312.80	Quote	Quote	Quote	Quote
121	DESTINATION SIGNS	Luminator GEN 4 Horizon 100% Amber LED Sign (16x 160)--Front, Side , and Rear	1	\$ 1,370.20	Quote	Quote	Quote	Quote
122	DESTINATION SIGNS	Luminator Spectrum 100% Full Color LED GEN IV Front Sign (16 x 112)	1	\$ 5,500.00	Quote	Quote	Quote	Quote
123	DESTINATION SIGNS	Luminator/Twinvision--Add Front Run Sign--Amber LED	1	\$ 1,082.40	Quote	Quote	Quote	Quote
124	DESTINATION SIGNS	Luminator/Twinvision--Add Front Run Sign--Silver LED	1	\$ 1,375.00	Quote	Quote	Quote	Quote
125	DESTINATION SIGNS	Luminator/Twinvision--Add Front Run Sign--Color LED	1	\$ 2,200.00	Quote	Quote	Quote	Quote
126	DESTINATION SIGNS	Luminator RearView Camera Integrated into Rear LED Sign	1	\$ 104.50	Quote	Quote	Quote	Quote
127	DESTINATION SIGNS	Luminator Rearview Camera without Rear LED Sign	1	\$ 440.00	Quote	Quote	Quote	Quote
128	DESTINATION SIGNS	Luminator--Delete Rear Sign	1	\$ 880.00	Quote	Quote	Quote	Quote
129	DESTINATION SIGNS	I/O Controls Standard Amber Front, Side, and Rear	1	Standard				
130	DESTINATION SIGNS		1					
131	DESTINATION SIGNS		1					
132	DESTINATION SIGNS		1					
133	DESTINATION SIGNS		1					
134	DESTINATION SIGNS		1					
135	DESTINATION SIGNS		1					
136	DESTINATION SIGNS		1					
137	DESTINATION SIGNS		1					
138	DESTINATION SIGN SOFTWARE	Luminator Program Software	1	\$ 1,214.40	Quote	Quote	Quote	Quote
139	DESTINATION SIGN SOFTWARE	TwinVision Program Software	1	\$ 802.70	Quote	Quote	Quote	Quote
140	DESTINATION SIGN SOFTWARE	Luminator Destination Sign Wireless Programming	1	\$ 3,795.00	Quote	Quote	Quote	Quote
141	DESTINATION SIGN SOFTWARE	I/O Controls Standard Software	1	Standard				
142	DESTINATION SIGN SOFTWARE		1					
143	DESTINATION SIGN SOFTWARE		1					
144	DOOR SYSTEM--FRONT	OEM Standard Air Open/Spring Close Front Door with Full Driver Control--31.75" Minimum Doorway Clear Width	1	N/A				
145	DOOR SYSTEM--FRONT	BYD Eletric Slide Glide Front Door	1	Standard				
146	DOOR SYSTEM--FRONT		1					
147	DOOR SYSTEM--FRONT		1					
148	DOOR SYSTEM--REAR	OEM Standard Air Open/Spring Close Rear Door with Full Driver Control--31.75" Minimum Doorway Clear Width	1	N/A				
149	DOOR SYSTEM--REAR	Add Touch Bars (Air Open / Spring Close) at Rear Door with Driver Override	1	\$ 205.20	Quote	Quote	Quote	Quote
150	DOOR SYSTEM--REAR	Add Touch Tape at Rear Doors	1	\$ 352.20	Quote	Quote	Quote	Quote
151	DOOR SYSTEM--REAR	BYD Eletric Slide Glide Rear Door	1	Standard				
152	DOOR SYSTEM--REAR		1					
153	DOOR SYSTEM--REAR		1					
154	DOOR SYSTEM	Add Exterior Air Release (Front Door Control Valve)	1	N/A				
155	DOOR SYSTEM	Add Vapor Class 5 Position Analog Controller	1	\$ 1,154.40	Quote	Quote	Quote	Quote
156	DOOR SYSTEM	Add Push Button Door Controls	1	\$ 690.00	Quote	Quote	Quote	Quote
157	DOOR SYSTEM	Add--Vapor Activair Differential Engine for Slide-Glide Doors	1	\$ 438.46	Quote	Quote	Quote	Quote
158	DOOR SYSTEM	Add--Vapor CLASS Acoustic (Photo Sensor)	1	\$ 498.00	Quote	Quote	Quote	Quote
159	DOOR SYSTEM	Add--Vapor Digital Door Control - DDC	1	\$ 690.00	Quote	Quote	Quote	Quote
160	DOOR SYSTEM	Add--Vapor Electric Transit Operator - ETO	1	\$ 576.12	Quote	Quote	Quote	Quote
161	DOOR SYSTEM	Add--Vapor Light Touch Bars	1	\$ 403.66	Quote	Quote	Quote	Quote
162	DOOR SYSTEM	Add--Vapor Optical Pressure Switch - OPS	1	\$ 374.00	Quote	Quote	Quote	Quote
163	DOOR SYSTEM		1					

Line Item	Description	Part #	QTY	Yr1	Yr2	Yr3	Yr 4	Yr5
164	DOOR SYSTEM		1					
165	DOOR SYSTEM		1					
166	DOOR SYSTEM		1					
167	DRIVER BARRIER	None	1	Standard				
168	DRIVER BARRIER	Drivers Barrier Storage Box	1	Quote				
169	DRIVER BARRIER	Driver's Security Enclosure	1	Quote				
170	DRIVER BARRIER	Flat Melamine, Two Piece	1	Quote				
171	DRIVER BARRIER	Plexiglass Drivers Security Enclosure Door	1	Quote				
172	DRIVER BARRIER	Wrap Around Fiberglass Drivers Barrier	1	Quote				
173	DRIVER BARRIER	Wraparound fiberglass, without schedule holders, with drivers barrier grap handle	1	Quote				
174	DRIVER BARRIER		1					
175	DRIVER BARRIER	Notes: vendor price varies on quantity	1					
176	DRIVER BARRIER		1					
177	DRIVER BARRIER		1					
178	DRIVER CONTROLS	Williams Controls 41 Degree Throttle and Brake Pedal (Non-Adjustable)	1	Quote				
179	DRIVER CONTROLS	Kongsberg Adjustable Throttle and Brake Pedal	1	N/A				
180	DRIVER CONTROLS	Teleflex Adjustable Throttle and Brake Pedal	1	N/A				
181	DRIVER CONTROLS	12 V Cigarette Light Adaptor for PC auxiliary power-Drivers area	1	\$ 20.80	Quote	Quote	Quote	Quote
182	DRIVER CONTROLS		1					
183	DRIVER CONTROLS	BYD Non-adjustable 36 Degree Throttle and Brake Pedal	1	Standard				
184	DRIVER HEATERS	Dash Fan	1	\$ 67.60	Quote	Quote	Quote	Quote
185	DRIVER HEATERS		1					
186	DRIVER HEATERS		1					
187	DRIVERS SEAT	USSC G2A Evolution, with Fabric, with 3-Point Belt (Lap & Shoulder)	1	\$ 1,362.10	Quote	Quote	Quote	Quote
188	DRIVERS SEAT	Recaro Ergo Metro, with Fabric, with 2-Point Belt (Lap)	1	\$ -				
189	DRIVERS SEAT	Recaro Ergo Metro, with Fabric, with 3-Point Belts (Lap & Shoulder)	1	Standard				
190	DRIVERS SEAT	Add Vinyl Upholstery to Recaro Ergo Metro	1	\$ -				
191	DRIVERS SEAT	Add Orange Shoulder Belt to Recaro Ergo Metro	1	\$ 132.00	Quote	Quote	Quote	Quote
192	DRIVERS SEAT	Add Adjustable D-Ring to Recaro Ergo Metro	1	\$ 220.00	Quote	Quote	Quote	Quote
193	DRIVERS SEAT	Add Headrest to Recaro Ergo Metro	1	\$ -				
194	DRIVERS SEAT	Add Drivers Seat Vacancy Alarm to Recaro Ergo Metro	1	\$ 117.70	Quote	Quote	Quote	Quote
195	DRIVERS SEAT	Add Seat Belt Alarm to Recaro Ergo Metro	1	\$ 38.50	Quote	Quote	Quote	Quote
196	DRIVERS SEAT	USSC 9100 ALX, with Fabric, with 2-Point Belt (Lap)	1	\$ 193.90	Quote	Quote	Quote	Quote
197	DRIVERS SEAT	USSC 9100 ALX, with Fabric, with 3-Point Belt (Lap & Shoulder)	1	\$ 405.10	Quote	Quote	Quote	Quote
198	DRIVERS SEAT	USSC G2 Evolution, with Fabric, with 2-Point Belt (Lap)	1	\$ 1,175.10	Quote	Quote	Quote	Quote
199	DRIVERS SEAT	USSC G2 Evolution, with Fabric, with 3-Point Belt (Lap & Shoulder)	1	\$ 1,362.10	Quote	Quote	Quote	Quote
200	DRIVERS SEAT	USSC G2A Evolution, with Fabric, with 2-Point Belt (Lap)	1	\$ 1,175.10	Quote	Quote	Quote	Quote
201	DRIVERS SEAT	USSC Q Series, with Fabric, with 2-Point Belt (Lap)	1	\$ 1,111.30	Quote	Quote	Quote	Quote
202	DRIVERS SEAT	USSC Q Series, with Fabric, with 3-Point Belt (Lap & Shoulder)	1	\$ 1,220.20	Quote	Quote	Quote	Quote
203	DRIVERS SEAT	Add Vinyl Upholstery to USSC Seat	1	\$ -				
204	DRIVERS SEAT	Add Orange Shoulder Belt to USSC Seat	1	\$ -				
205	DRIVERS SEAT	Add Adustable D-Ring to USSC Seat	1	Quote				
206	DRIVERS SEAT	Add Headrest to USSC Seat	1	\$ -				
207	DRIVERS SEAT	Add Drivers Seat Vacancy Alarm to USSC Seat	1	\$ 91.00	Quote	Quote	Quote	Quote

Line Item	Description	Part #	QTY	Yr1	Yr2	Yr3	Yr 4	Yr5
208	DRIVERS SEAT	Add Seat Belt Alarm to USSC Seat	1	\$ 58.50	Quote	Quote	Quote	Quote
209	DRIVERS SEAT		1					
210	DRIVERS SEAT	Add Adjustable D-Ring to USSC ALX Q Series Seat	1	\$ 210.00	Quote	Quote	Quote	Quote
211	DRIVERS SEAT	Add Adjustable D-Ring to USSC G2A Seat	1	\$ 210.00	Quote	Quote	Quote	Quote
212	DRIVERS SEAT		1					
213	DRIVERS SEAT		1					
214	DRIVERS SEAT		1					
215	DRIVERS SEAT		1					
216	DRIVERS SEAT		1					
217	DRIVERS SEAT		1					
218	DRIVERS SEAT		1					
219	ELECTRICAL EQUIPMENT CABINET	44"H x 22.5"W x 20"D, 1-Door	1	Quote				
220	ELECTRICAL EQUIPMENT CABINET	33"H x 20"D x 22.5"W, 2-Doors	1	Quote				
221	ELECTRICAL EQUIPMENT CABINET	33"H x 20"D x 22.5"W, 1-Door	1	Quote				
222	ELECTRICAL EQUIPMENT CABINET	33"H x 20"D x 22.5"W, 1-Door, Louvered Back Panel	1	Quote				
223	ELECTRICAL EQUIPMENT CABINET	8.25"H x 20"W x 13"D, 1-Door, Curbside Wheelhousing Storage Box	1	Quote				
224	ELECTRICAL EQUIPMENT CABINET	Add 5/16" Square Key Lock--Each	1	Quote				
225	ELECTRICAL EQUIPMENT CABINET	Add Exhaust Ventilation Fan--Each	1	Quote				
226	ELECTRICAL EQUIPMENT CABINET	Add Standard Key Lock--Each	1	Quote				
227	ELECTRICAL EQUIPMENT CABINET	BYD 50"H X 41"W' X 26" D	1	Standard				
228	ELECTRICAL EQUIPMENT CABINET		1					
229	ELECTRICAL EQUIPMENT CABINET		1					
230	ELECTRICAL EQUIPMENT CABINET		1					
231	EXTERIOR LIGHTS	4" Diameter LED Tail Lights--Turn, Tail, Stop, Reverse	1	Quote				
232	EXTERIOR LIGHTS	4 LED Headlights (Low & High Beam)	1	Quote				
233	EXTERIOR LIGHTS	7" Diameter LED Tail Lights--Turn, Tail, Stop, Reverse	1	Quote				
234	EXTERIOR LIGHTS	Add 4" Diameter LED Brake Light--Each	1	Quote				
235	EXTERIOR LIGHTS	Add 7" Diameter LED Brake Light--Each	1	Quote				
236	EXTERIOR LIGHTS	Add 18" Red LED Strip Brake Light--Each	1	Quote				
237	EXTERIOR LIGHTS	Add 18" Amber LED Strip Brake Light--Each	1	Quote				
238	EXTERIOR LIGHTS	Add Red LED "STOP" Sign	1	Quote				
239	EXTERIOR LIGHTS	Add Amber Triangle Style LED "Yield" Sign	1	Quote				
240	EXTERIOR LIGHTS	2 LED Headlights (Low Beam Only)	1	Quote				
241	EXTERIOR LIGHTS	2 LED Headlights (High Beam Only)	1	Quote				
242	EXTERIOR LIGHTS	Dual Halogen Headlights (Low & High Beam Only)	1	Quote				
243	EXTERIOR LIGHTS	Fog Lights	1	Quote				
244	EXTERIOR LIGHTS		1					
245	EXTERIOR LIGHTS		1					
246	EXTERIOR LIGHTS		1					
247	EXTERIOR LIGHTS		1					
248	EXTERIOR LIGHTS		1					
249	EXTERIOR LIGHTS		1					
250	EXTERIOR MIRRORS	B&R 10"x11", 2-Piece, Heated, Remote Control (Both Sides)	1	\$ 169.34	Quote	Quote	Quote	Quote
251	EXTERIOR MIRRORS	B&R 8"x8", 1-Piece, Remote Control Both Sides, Stainless Steel Arms	1	\$ 39.56	Quote	Quote	Quote	Quote
252	EXTERIOR MIRRORS	B&R 8"x10", 2-Piece, Heated, Remote Control (Both Sides)	1	\$ 233.38	Quote	Quote	Quote	Quote
253	EXTERIOR MIRRORS	B&R 8"x15", 2-Piece, Heated, Remote Control (Both Sides)	1	\$ 220.62	Quote	Quote	Quote	Quote
254	EXTERIOR MIRRORS	B&R 10"x13", 1-Piece, Heated, Remote Control (Both Sides)	1	\$ 51.60	Quote	Quote	Quote	Quote
255	EXTERIOR MIRRORS	Delete Remote Control (Per Side)	1	\$ 543.40	Quote	Quote	Quote	Quote
256	EXTERIOR MIRRORS	Add Turn Signal Indicator on Exterior Mirror Head	1	\$ 1,203.92	Quote	Quote	Quote	Quote
257	EXTERIOR MIRRORS	5" Mirror Front Bike Rack Mirror	1	\$ 658.22	Quote	Quote	Quote	Quote

Line Item	Description	Part #	QTY	Yr1	Yr2	Yr3	Yr 4	Yr5
258	EXTERIOR MIRRORS		1					
259	EXTERIOR MIRRORS		1					
260	EXTERIOR MIRRORS		1					
261	EXTERIOR MIRRORS		1					
262	EXTERIOR MIRRORS		1					
263	FARE COLLECTION	No Farebox , Provide Power Circuit and Groundstrap Only	1	Standard				
264	FARE COLLECTION	GFI 41" Tall Odyssey	1	\$ 17,433.30	\$ 17,433.30	Quote	Quote	Quote
265	FARE COLLECTION	Add Farebox Lamp, Ceiling mounted	1	\$ 65.00	Quote	Quote	Quote	Quote
266	FARE COLLECTION	Install Customer Provided Farebox Base Plate	1	Quote				
267	FARE COLLECTION		1					
268	FARE COLLECTION		1					
269	FARE COLLECTION		1					
270	FIRE SUPPRESSION SYSTEM	Fogmaker Water Mist Fire Suppression System	1	Quote				
271	FIRE SUPPRESSION SYSTEM	Amerex V-25 Fire Suppression System	1	Standard				
272	FIRE SUPPRESSION SYSTEM	Kidde Dual Spectrum LTD Fire Detection and Suppression System	1	Quote				
273	FIRE SUPPRESSION SYSTEM	Add Kidde Armored LTD	1	Quote				
274	FIRE SUPPRESSION SYSTEM	Add Kidde TLSE	1	Quote				
275	FIRE SUPPRESSION SYSTEM	Add Kidde Optical Sensor (each)	1	Quote				
276	FIRE SUPPRESSION SYSTEM		1					
277	FIRE SUPPRESSION SYSTEM		1					
278	FIRE SUPPRESSION SYSTEM		1					
279	FLOORING	Greenwood ACQ Plywood	1	Quote				
280	FLOORING	Altro Transflor	1	Quote				
281	FLOORING	RCA Rubber Flooring	1	Quote				
282	FLOORING	Composite Sub Floor	1	Standard				
283	FLOORING	Gerflor Tarabus Helios Flooring	1	Standard				
284	FLOORING	Stainless Steel Trim on Risers and Wheelhousings	1	Quote				
285	FLOORING		1					
286	FLOORING		1					
287	FLOORING		1					
288	FRAME	None	1					
289	FRAME	Engine Skid Protection with Extended Tow Eyes	1	N/A				
290	FRAME	Engine Skid Protection W/ Extended Tow Eyes & 2" Thick x 2" Wide Wear Plate	1	N/A				
291	FRAME	Reinforced A-Post Skid Plates (Per Side)	1	Quote				
292	FRAME	Frame Undercoating	1	Quote				
293	FRAME		1					
294	FRAME		1					
295	FRAME		1					
296	GAUGES--DRIVERS DASH	Speedometer, Air Pressure Gauge, 12/24 volt Gauges, Coolant Temp Gauge, State of Charge	1	Standard				
297	GAUGES--DRIVERS DASH	Add Low State of Charge Alarm	1	Quote				
298	GAUGES--DRIVERS DASH	Add Low State of Charge Warning Indicator	1	Standard				
299	GAUGES--DRIVERS DASH	Add Engine Hour Meter	1	N/A				
300	GAUGES--DRIVERS DASH	Add Auxiliary Stop Request Light	1	Quote				
301	GAUGES--DRIVERS DASH	Add Mutil Function Display (MFD)	1	Standard				
302	GAUGES--DRIVERS DASH		1					
303	GAUGES--DRIVERS DASH		1					
304	GAUGES--DRIVERS DASH		1					
305	HEATING/AIR CONDITIONING	Thermo King TE-14 All-Electric	1	\$ 24,605.00	Quote	Quote	Quote	Quote
306	HEATING/AIR CONDITIONING	Sutrak All-Electric HVAC SYSTEM--(Roof Mounted/Rear Mounted HVAC system)	1	Quote				
307	HEATING/AIR CONDITIONING	SanUVAire- Safe Breathe Air Purification System	1	Quote				
308	HEATING/AIR CONDITIONING	Thermo King Pressure and Return Display Mounted to Unit	1	\$ 540.00	Quote	Quote	Quote	Quote



Line Item	Description	Part #	QTY	Yr1	Yr2	Yr3	Yr 4	Yr5
309	HEATING/AIR CONDITIONING	BYD HVAC	1	Standard				
310	HEATING/AIR CONDITIONING		1					
311	HUBOMETER	Veeder Root Mechanical without Tenths, without Guard	1	\$ 246.00	Quote	Quote	Quote	Quote
312	HUBOMETER	E J Ward Data System (Includes CANceiver, Display Unit, and Antenna)	1	Quote				
313	HUBOMETER	Engler (Stemco) Mechanical without Tenths, without Guard	1	\$ 109.44	Quote	Quote	Quote	Quote
314	HUBOMETER	S/A Fleetwatch Data Logger JX 55	1	\$ 1,030.50	Quote	Quote	Quote	Quote
315	HUBOMETER	Add Hubodometer Guard	1	\$ 101.40	Quote	Quote	Quote	Quote
316	HUBOMETER		1					
317	HUBOMETER		1					
318	HUBOMETER		1					
319	INTERIOR LIGHTS	LED Interior Lights	1	Standard				
320	INTERIOR LIGHTS		1					
321	INTERIOR LIGHTS		1					
322	INTERIOR MIRRORS	8.25" x 16" Interior Rear View Mirror, Flat Faced	1	Standard				
323	INTERIOR MIRRORS	12" Convex at Rear Door Stanchion	1	Standard				
324	INTERIOR MIRRORS	6" Flat Faced Spot Mirror at Bottom of Front Destination Sign Compartment	1	\$ 35.72	Quote	Quote	Quote	Quote
325	INTERIOR MIRRORS	4.75" x 15" Interior Mirror, Flat Faced	1	\$ 26.97	Quote	Quote	Quote	Quote
326	INTERIOR MIRRORS		1					
327	INTERIOR MIRRORS		1					
328	ITS SYSTEM	None	1	Standard				
329	ITS SYSTEM	Avail IVU with MDC, GPS, APC, and WLAN	1	Quote				
330	ITS SYSTEM	Avail System Pre-Wire (IVU, MDT, APC, Fare Box)	1	Quote				
331	ITS SYSTEM	Clever Devices IVN 5 (AVL/GPS/CAD/Automatic Stop Annunciation)	1	\$ 16,801.60	Quote	Quote	Quote	Quote
332	ITS SYSTEM	Clever Devices Automatic Vehicle Monitoring System	1	\$ 4,773.50	Quote	Quote	Quote	Quote
333	ITS SYSTEM	Clever Devices BusTime System	1	\$ 2,954.10	Quote	Quote	Quote	Quote
334	ITS SYSTEM	Clever Devices CleverCAD System	1	\$ 4,380.80	Quote	Quote	Quote	Quote
335	ITS SYSTEM	Clever Devices CleverVision	1	\$ 14,407.30	Quote	Quote	Quote	Quote
336	ITS SYSTEM	Clever Devices Secure Bus Access System	1	\$ 2,656.00	Quote	Quote	Quote	Quote
337	ITS SYSTEM	Clever Devices Turn Warning System	1	\$ 2,993.70	Quote	Quote	Quote	Quote
338	ITS SYSTEM	Opticom Traffic Signal Priority	1	Quote				
339	ITS SYSTEM	MobileEye Collision Avoidance System	1	\$ 6,490.00	Quote	Quote	Quote	Quote
340	ITS SYSTEM	Transloc Transit Visualization System AVL	1	Quote				
341	ITS SYSTEM	Intelligent Vehicle System Prewire Only (Pending System Specification)	1	\$ 15,913.60	Quote	Quote	Quote	Quote
342	ITS SYSTEM	Luminator InfoTransit--2 Monitors (18.5") Proxys Module	1	\$ 2,290.00	Quote	Quote	Quote	Quote
343	ITS SYSTEM	Luminator InfoTransit--Upgrade to 29" Monitors	1	\$ 4,620.00	Quote	Quote	Quote	Quote
344	ITS SYSTEM	Luminator InfoTransit--Upgrade to 37" Monitors	1	\$ 5,346.00	Quote	Quote	Quote	Quote
345	ITS SYSTEM	Luminator InfoLite--2 Monitors (18.5") Proxys Module	1	\$ 2,090.00	Quote	Quote	Quote	Quote
346	ITS SYSTEM	Luminator InfoLite--Upgrade to 29" Monitors	1	\$ 4,620.00	Quote	Quote	Quote	Quote
347	ITS SYSTEM	Luminator InfoLite--Upgrade to 37" Monitors	1	\$ 5,346.00	Quote	Quote	Quote	Quote
348	ITS SYSTEM		1	\$ -				
349	ITS SYSTEM	Notes: ITS Specs and BOM will vary by project detailed spec. New updated quote based on updated needs to be provided for each project. All price above is based on vendor base specs.	1					
350	ITS SYSTEM		1					
351	ITS SYSTEM		1					
352	ITS SYSTEM		1					
353	ITS SYSTEM		1					
354	ITS SYSTEM		1					

Line Item	Description	Part #	QTY	Yr1	Yr2	Yr3	Yr 4	Yr5
355	ITS SYSTEM		1					
356	ITS SYSTEM		1					
357	ITS SYSTEM		1					
358	MISCELLANEOUS	Scissor Style Sunshades--Drivers Windows	1	Standard				
359	MISCELLANEOUS	Drivers Coat Hook	1	Standard				
360	MISCELLANEOUS	Roller Style Sunshades--Drivers Windows	1	Quote				
361	MISCELLANEOUS	Euramatic Cup Holder	1	\$ 31.20	Quote	Quote	Quote	Quote
362	MISCELLANEOUS	Registration Card holder	1	\$ 11.69	Quote	Quote	Quote	Quote
363	MISCELLANEOUS	Stainless Steel Waste Basket and Bracket	1	\$ 22.10	Quote	Quote	Quote	Quote
364	MISCELLANEOUS		1	\$ -				
365	MISCELLANEOUS		1	\$ -				
366	MISCELLANEOUS		1	\$ -				
367	MODESTY PANELS	Standard Melamine Panels on Lower Section	1	Standard				
368	MODESTY PANELS	Quick Changing Glazing Upper Clear Plexiglas Modesty Panels Both Sides of Rear Exit Door	1	Quote				
369	MODESTY PANELS	Front Door Modesty Panel	1	Quote				
370	MODESTY PANELS	Lower Modesty Panel Forward of Rear Door	1	Quote				
371	MODESTY PANELS	Melamine Panel Lower Section (Aft Rear Door)	1	Quote				
372	MODESTY PANELS	Upper Clear Plexiglas Modesty Panel Forward Rear Door	1	Quote				
373	MODESTY PANELS		1	\$ -				
374	MODESTY PANELS		1	\$ -				
375	MODESTY PANELS		1	\$ -				
376	PAINT	One Color w/ Black Mask at Windows	1	Quote				
377	PAINT	Add--Additional Color--Per Pass	1	Quote				
378	PAINT	Add--Clear Coat	1	Standard				
379	PAINT	Add Roof Numbers	1	Quote				
380	PAINT	Custom Paint / Decal Design (Per Spec)	1	Quote				
381	PAINT	White Color w/ Black Mask at Windows	1	Standard				
382	PAINT		1	\$ -				
383	PAINT	Notes: Paint price and labor hours varies a lot by spec requested.	1	\$ -				
384	PAINT		1	\$ -				
385	PASSENGER BARRIERS	Wheelchair Barrier--Curbside Aft of ADA Area	1	N/A				
386	PASSENGER BARRIERS	Wheelchair Barrier--Streetside Aft of ADA Area	1	N/A				
387	PASSENGER BARRIERS		1	\$ -				
388	PASSENGER BARRIERS		1	\$ -				
389	PASSENGER SEATING	USSC 4ONE Gemini	1	Standard				
390	PASSENGER SEATING	Kiel North America Citos	1	\$ 5,435.65	Quote	Quote	Quote	Quote
391	PASSENGER SEATING	Kiel North America Intra	1	\$ 6,658.85	Quote	Quote	Quote	Quote
392	PASSENGER SEATING	USSC 4One Angel	1	\$ 2,101.00	Quote	Quote	Quote	Quote
393	PASSENGER SEATING	AMSECO Vision	1	\$ 2,185.70	Quote	Quote	Quote	Quote
394	PASSENGER SEATING	AMSECO Insight	1	\$ 3,334.10	Quote	Quote	Quote	Quote
395	PASSENGER SEATING	AMESCO Insight Prime Plus	1	\$ 10,384.00	Quote	Quote	Quote	Quote
396	PASSENGER SEATING	Add--USB Charging Ports at Passenger Locations	1	\$ 100.80	Quote	Quote	Quote	Quote
397	PASSENGER SEATING	Add--Hinged Rear Settee	1	\$ 1,402.80	Quote	Quote	Quote	Quote
398	PASSENGER SEATING	Add--3rd Step To Perimeter Seating (Except Settee)	1	\$ 1,485.60	Quote	Quote	Quote	Quote
399	PASSENGER SEATING	Notes: Standard spec comes with basic ADA restraints. (Example: Upgrade to Q'Pod and Quantum will be additional cost)	1	\$ -				
400	PASSENGER SEATING	Notes: Seating layout can be quoted again once the layout is confirmed.	1	\$ -				
401	PASSENGER SEATING	Notes: Price is based on 40', Other models differ with quotation upon request.	1	\$ -				
402	PASSENGER SEATING		1	\$ -				
403	PASSENGER SEATING		1	\$ -				
404	PASSENGER SIGNALS	Pull Cords (Neutral) with Touch Pad at Wheelchair Location	1	Standard				
405	PASSENGER SIGNALS	Stop Request Button At Rear Door Stanchion	1	Standard				

Line Item	Description	Part #	QTY	Yr1	Yr2	Yr3	Yr 4	Yr5
406	PASSENGER SIGNALS	Touch Tape (At Window Mullions)	1	\$ 60.00	Quote	Quote	Quote	Quote
407	PASSENGER SIGNALS		1	\$ -				
408	PASSENGER SIGNALS		1	\$ -				
409	PASSENGER SIGNALS		1	\$ -				
410	PASSENGER WINDOWS	Ricon Hidden Frame/Bonded--Full Fixed	1	Standard				
411	PASSENGER WINDOWS	Ricon Standard Frame, Safety Glass--Full Sliders	1	Standard				
412	PASSENGER WINDOWS	Ricon Standard Frame, Safety Glass--Full Fixed	1	Standard				
413	PASSENGER WINDOWS	Add Thermo Guard to Ricon Standard Frame	1	Quote				
414	PASSENGER WINDOWS	Add Thermo Guard to Ricon Hidden Frame/Bonded	1	Quote				
415	PASSENGER WINDOWS	Arow Standard Frame, Safety Glass--Full Sliders	1	Quote				
416	PASSENGER WINDOWS	Arow Standard Frame, Safety Glass--Full Fixed	1	Quote				
417	PASSENGER WINDOWS	Arow Hidden Frame/Bonded--Full Fixed	1	Quote				
418	PASSENGER WINDOWS	Add Thermo Guard to Arow Standard Frame	1	Quote				
419	PASSENGER WINDOWS	Add Thermo Guard to Arow Hidden Frame/Bonded	1	Quote				
420	PASSENGER WINDOWS	Add Window Guards (Acrylic or Film)	1	\$ 653.40	Quote	Quote	Quote	Quote
421	PASSENGER WINDOWS	Above quote is for each piece of window	1					
422	PASSENGER WINDOWS	Ricon Hidden Frame - Full Fixed + Transom	1	Standard				
423	PASSENGER WINDOWS		1	\$ -				
424	PASSENGER WINDOWS		1	\$ -				
425	PASSENGER WINDOWS		1	\$ -				
426	PUBLIC ANNOUNCEMENT SYSTEM	PA with Handheld Mic w / (8) Flush Mount Speakers 40' (6) w / 30'	1	Quote				
427	PUBLIC ANNOUNCEMENT SYSTEM	(1) Interior/Both/Exterior Speaker Selct Toggle Switch without Guard & (1) Rheostat Volume Control with XLR Mic Jack	1	Quote				
428	PUBLIC ANNOUNCEMENT SYSTEM	Boom Microphone--Soundview SVA50SF (24") without ON/OFF Switch on Microphone, Momentary Button toe Switch, Floor Bracket Mounted	1	Quote				
429	PUBLIC ANNOUNCEMENT SYSTEM	Clever Devises - Speakeasy II	1	\$ 2,007.20	Quote	Quote	Quote	Quote
430	PUBLIC ANNOUNCEMENT SYSTEM	Luminator VAS System	1	\$ 6,597.50	Quote	Quote	Quote	Quote
431	PUBLIC ANNOUNCEMENT SYSTEM	Clever Devices Automated Voice Announcement System	1	\$ 3,165.50	Quote	Quote	Quote	Quote
432	PUBLIC ANNOUNCEMENT SYSTEM	REI PA System w/ Mic + Interior and Exterior Speakers	1	Standard				
433	PUBLIC ANNOUNCEMENT SYSTEM		1	\$ -				
434	PUBLIC ANNOUNCEMENT SYSTEM		1	\$ -				
435	REAR RUN GAUGES	Add Hour Meter	1	Quote				
436	REAR RUN GAUGES	Add A/C Hour Meter	1	Quote				
437	REAR RUN GAUGES	Add Coolant Temperature--Mechanical	1	Quote				
438	REAR RUN GAUGES	Add Coolant Temperature--Electrical	1	Quote				
439	REAR RUN GAUGES	Add Voltmeter (12V or 24V)	1	Quote				
440	REAR RUN GAUGES		1					
441	REAR RUN GAUGES		1					
442	REAR RUN GAUGES		1					
443	REAR RUN GAUGES		1					
444	ROOF HATCHES	Manual Hatch at Front and Rear Positions	1	Standard				
445	ROOF HATCHES	Delete (1) Roof hatch	1	Quote				
446	ROOF HATCHES		1	\$ -				
447	ROOF HATCHES		1	\$ -				
448	SAFETY EQUIPMENT	5LBS ABC Fire Extinguisher (Mounted Behind Driver Seat)	1	Standard				
449	SAFETY EQUIPMENT	Safety Triangles (K-D 610-4645)	1	\$ 36.30	Quote	Quote	Quote	Quote
450	SAFETY EQUIPMENT	Bio- Hazard Disposal Kit	1	\$ 112.43	Quote	Quote	Quote	Quote
451	SAFETY EQUIPMENT	Blood Born Pathogens Kit	1	\$ 28.49	Quote	Quote	Quote	Quote
452	SAFETY EQUIPMENT	Ten Unit First Aid Kit	1	\$ 82.49	Quote	Quote	Quote	Quote
453	SAFETY EQUIPMENT	Wheel Chocks ( Per Set )	1	\$ 28.43	Quote	Quote	Quote	Quote


Line Item	Description	Part #	QTY	Yr1	Yr2	Yr3	Yr 4	Yr5
454	SAFETY EQUIPMENT		1	\$ -				
455	SAFETY EQUIPMENT		1	\$ -				
456	SAFETY EQUIPMENT		1	\$ -				
457	SAFETY EQUIPMENT		1	\$ -				
458	SCHEDULE RACK	NONE	1	Standard				
459	SCHEDULE RACK	(1) Schedule Holder OBIC 20/9 4PW-49/923BO- 4 Slots,Gray Color	1	\$ 282.00	Quote	Quote	Quote	Quote
460	SCHEDULE RACK	22" x 21" Black, RH Load Open Back	1	Quote				
461	SCHEDULE RACK	Innocom Schedule Racks 3.75" x 7" x 1.5"	1	Quote				
462	SCHEDULE RACK	Innocom Schedule Racks 8.62" x 1 1" x 1"	1	Quote				
463	SCHEDULE RACK	OBIC To (4) Quad Pamphlet & (1) Single Pamphlet Holders	1	\$ 226.80	Quote	Quote	Quote	Quote
464	SCHEDULE RACK	Transit Info Products OBICT10P2LTRMC	1	\$ 275.00	Quote	Quote	Quote	Quote
465	SCHEDULE RACK	Transit Information Products -19"x 21" OBIC 19/214P1LTRMC	1	\$ 288.00	Quote	Quote	Quote	Quote
466	SCHEDULE RACK		1	\$ -				
467	SCHEDULE RACK		1	\$ -				
468	SCHEDULE RACK		1	\$ -				
469	SCHEDULE RACK		1	\$ -				
470	STANCHIONS/GRAB RAILS	Stainless Steel Vertical Stanchions, Grabrails, and Modesty Panel Tubes	1	Standard				
471	STANCHIONS/GRAB RAILS	Vinyl Coated Nylon Grab Straps--Each	1	Standard				
472	STANCHIONS/GRAB RAILS	Yellow Powder Coated Vertical Stanchions, Grab Rails, and Modesty Panel Tubes	1	Quote				
473	STANCHIONS/GRAB RAILS	Yellow Powder Coated Vertical Stanchions Only	1	Standard				
474	STANCHIONS/GRAB RAILS	Vehicle Stanchion at Front Wheel Wells--Each	1	Standard				
475	STANCHIONS/GRAB RAILS	Add Farebox Grabrail	1	\$ -				
476	STANCHIONS/GRAB RAILS	Horizontal Grabrail on Curbside & Streetside Wheelhousing	1	Standard				
477	STANCHIONS/GRAB RAILS	SSTL Spring Loaded Grab Handle--Each	1	Quote				
478	STANCHIONS/GRAB RAILS		1	\$ -				
479	STANCHIONS/GRAB RAILS		1	\$ -				
480	STANCHIONS/GRAB RAILS		1	\$ -				
481	STANCHIONS/GRAB RAILS		1	\$ -				
482	STANCHIONS/GRAB RAILS		1	\$ -				
483	STEERING SYSTEM	Douglas, Single Tilt, Without Column Turn Signal, Without High-Low Beam Switch	1	Standard				
484	STEERING SYSTEM	Steering Wheel--Standard 20" Non-Padded 3 Spoke Wheel with Center Horn Button	1	Quote				
485	STEERING SYSTEM	Ross Model TS 65	1	Quote				
486	STEERING SYSTEM	Steering Box--TRW TAS6505	1	Quote				
487	STEERING SYSTEM	TRW Electric Assisted Steering	1	Quote				
488	STEERING SYSTEM	VIP Textured Steering Wheel	1	Quote				
489	STEERING SYSTEM	BYD Steering Wheel -- Standard 20"	1	Standard				
490	STEERING SYSTEM	BYD EHPS	1	Standard				
491	STEERING SYSTEM		1					
492	STYLING PACKAGES	Standard Styling Package	1	Standard				
493	STYLING PACKAGES	Windshield 2-Piece	1	Standard				
494	STYLING PACKAGES	Windshield 1-Piece	1	Quote				
495	STYLING PACKAGES	BRT Front Cap Styling Only	1	Quote				
496	STYLING PACKAGES	BRT Front Cap, Rear Cap and Engine Door Styling	1	Quote				
497	STYLING PACKAGES	BRT PLUS Front Cap, Rear Cap, Roof Line and Engine Door Styling	1	Quote				
498	STYLING PACKAGES	BRT Roof Fairings, Front or Rear (each)	1	Quote				
499	STYLING PACKAGES		1	\$ -				
500	STYLING PACKAGES		1	\$ -				
501	STYLING PACKAGES		1	\$ -				
502	STYLING PACKAGES		1	\$ -				

Line Item	Description	Part #	QTY	Yr1	Yr2	Yr3	Yr 4	Yr5
503	SURVEILLANCE CAMERA SYSTEMS	Apollo (8) Standard Definition Color Camera System, 6TB HDD, GPS, Wireless, Impact Sensor	1	\$ 3,289.60	Quote	Quote	Quote	Quote
504	SURVEILLANCE CAMERA SYSTEMS	Apollo--Add (1) Standard Definition Coler Camera	1	\$ 296.40	Quote	Quote	Quote	Quote
505	SURVEILLANCE CAMERA SYSTEMS	Apollo--Delete (1) Standard Definition Color Camera	1					
506	SURVEILLANCE CAMERA SYSTEMS	Apollo--Add (1) High Definition Color Camera	1	\$ 645.70	Quote	Quote	Quote	Quote
507	SURVEILLANCE CAMERA SYSTEMS	Apollo--Add 8TB HDD	1	\$ 539.00	Quote	Quote	Quote	Quote
508	SURVEILLANCE CAMERA SYSTEMS	Apollo Back Up Camera with LCD Screen	1	\$ 1,248.50	Quote	Quote	Quote	Quote
509	SURVEILLANCE CAMERA SYSTEMS	SEON NX-16 (7) Camera System, 2TB HDD, Wireless, GPS, Impact Sensor	1	\$ 11,216.20	Quote	Quote	Quote	Quote
510	SURVEILLANCE CAMERA SYSTEMS	SEON Add (1) Standard Definition Color Camera	1	Quote				
511	SURVEILLANCE CAMERA SYSTEMS	SEON Add (1) High Definition Color Camera	1	Quote				
512	SURVEILLANCE CAMERA SYSTEMS	SEON Add Solid State Harddrive (SSD)	1	Quote				
513	SURVEILLANCE CAMERA SYSTEMS	AngelTrax (7) Standard Definition Color Camera System, 1TB HDD, Wireless, GPS, Impact Sensor	1	\$ 3,551.40	Quote	Quote	Quote	Quote
514	SURVEILLANCE CAMERA SYSTEMS	AngelTrax--Add (1) Standard Definition Color Camera	1	\$ 202.73	Quote	Quote	Quote	Quote
515	SURVEILLANCE CAMERA SYSTEMS	AngelTrax--Add (1) High Definition Color Camera	1	\$ 226.13	Quote	Quote	Quote	Quote
516	SURVEILLANCE CAMERA SYSTEMS	AngelTrax--Add 1TB HDD (Double stacked 500GB HDD)	1	\$ 405.46	Quote	Quote	Quote	Quote
517	SURVEILLANCE CAMERA SYSTEMS	March Network 5412 (10) Camera--Kalatel Mobileview	1	Quote				
518	SURVEILLANCE CAMERA SYSTEMS	Mobileview NVR7000 (10) Camera System, High Definition, 4TB HDD, Wireless, GPS, Impact Sensor	1	\$ 5,900.00	Quote	Quote	Quote	Quote
519	SURVEILLANCE CAMERA SYSTEMS	Mobileview--Add (1) High Definition Camera	1	Quote				
520	SURVEILLANCE CAMERA SYSTEMS	Mobileview--Add Solid State Harddrive (SSD)	1	Quote				
521	SURVEILLANCE CAMERA SYSTEMS	REI Bus Watch Digital	1	\$ 2,940.00	Quote	Quote	Quote	Quote
522	SURVEILLANCE CAMERA SYSTEMS	Camera Pre Wire Package	1	Quote				
523	SURVEILLANCE CAMERA SYSTEMS	Apollo Pre-wire package	1	Quote				
524	SURVEILLANCE CAMERA SYSTEMS		1					
525	SURVEILLANCE CAMERA SYSTEMS		1					
526	SURVEILLANCE CAMERA SYSTEMS		1					
527	SURVEILLANCE CAMERA SYSTEMS		1					
528	SURVEILLANCE CAMERA SYSTEMS		1					
529	SURVEILLANCE CAMERA SYSTEMS		1					
530	SURVEILLANCE CAMERA SYSTEMS		1					
531	SURVEILLANCE CAMERA SYSTEMS		1					
532	SURVEILLANCE CAMERA SYSTEMS		1					
533	TIRES	Agency Supplied Tires	1	Standard				
534	TIRES	OEM Supplied Tires	1	\$ 4,620.00	Quote	Quote	Quote	Quote
535	TIRES	Tire Pressure Monitoring System	1	\$ 1,375.00	Quote	Quote	Quote	Quote
536	TIRES		1	\$ -				
537	TIRES		1	\$ -				
538	TIRES		1	\$ -				
539	TOWING	None	1	\$ -				
540	TOWING	Cole Hersee 12063 Electrical Tow Connector	1	Quote				
541	TOWING	Delete Cole Hersee Tow Connector	1	\$ -				
542	TOWING	Cole Hersee electrical tow connecor	1	Standard				
543	TOWING	BYD Standard: Cole Hersee #12080(J) 7-way plug connector	1	Standard				
544	TOWING		1	\$ -				
545	WHEELCHAIR RAMP	Lift U--Ramp (LU-18 Dual Mode Front Door Ramp Only)	1	Standard				
546	WHEELCHAIR RAMP	Ricon--6:1 Ratio, Single Slope Ramp -- SSR - Front Door Only	1	Standard				
547	WHEELCHAIR RAMP	Ricon -- 4:1 Ratio, FR2E - Front Door Only	1	Quote				



Line Item	Description	Part #	QTY	Yr1	Yr2	Yr3	Yr 4	Yr5
548	WHEELCHAIR RAMP	Notes: Above specs are applicable to BYD transit buses with 102' width.	1	\$ -				
549	WHEELCHAIR RAMP	Wheelchair Lift for C10M BYD 45' Coach	1	Standard				
550	WHEELCHAIR RAMP		1	\$ -				
551	WHEELCHAIR SECUREMENT	USSC--V-PRO-Reliant	1	Standard				
552	WHEELCHAIR SECUREMENT	Kiel North America K-Pod with Secubar	1	Quote				
553	WHEELCHAIR SECUREMENT	American Seating--Dual Auto Lok with Advanced Restraint Module (ARM)	1	\$ 752.40	Quote	Quote	Quote	Quote
554	WHEELCHAIR SECUREMENT	American Seating--Advanced Restraint Module (ARM) with Remote Belt Release	1	\$ 752.40	Quote	Quote	Quote	Quote
555	WHEELCHAIR SECUREMENT	American Seating--Q'Straint Q'Pod	1	\$ 3,502.40	Quote	Quote	Quote	Quote
556	WHEELCHAIR SECUREMENT	USSC--Q'Straint Q' POD	1	\$ 3,502.40	Quote	Quote	Quote	Quote
557	WHEELCHAIR SECUREMENT	Q'Straint Quantum	1	\$ 11,494.50	Quote	Quote	Quote	Quote
558	WHEELCHAIR SECUREMENT	Belt Guard and Wheelchair Ramp Pan Identification Numbers	1	Quote				
559	WHEELCHAIR SECUREMENT		1	\$ -				
560	WHEELCHAIR SECUREMENT		1	\$ -				
561	WHEELCHAIR SECUREMENT		1	\$ -				
562	WHEELCHAIR SECUREMENT		1	\$ -				
563	WHEELS/RIMS	(7) Alcoa Aluminum Polished Finish with Durabrite	1	\$ 372.00	Quote	Quote	Quote	Quote
564	WHEELS/RIMS	(7) Steel Powder Coated Finish, White or Black	1	N/A				
565	WHEELS/RIMS	(7) Alcoa Aluminum Clean & Buff Finish	1	\$ 294.00	Quote	Quote	Quote	Quote
566	WHEELS/RIMS	(7) Alcoa Aluminum Polished Finish	1	\$ 294.00	Quote	Quote	Quote	Quote
567	WHEELS/RIMS	(7) Alcoa Aluminum Clean & Buff Finish with Durabrite	1	\$ 363.60	Quote	Quote	Quote	Quote
568	WHEELS/RIMS	Alcoa Wheels--Add Duraflange	1	\$ 78.00	Quote	Quote	Quote	Quote
569	WHEELS/RIMS	Delete Spare Aluminum Wheel	1	Standard				
570	WHEELS/RIMS	Delete Spare Steel Wheel	1	Standard				
571	WHEELS/RIMS		1	\$ -				
572	WHEELS/RIMS		1	\$ -				
573	WHEELS/RIMS		1	\$ -				
574	WHEELS/RIMS		1	\$ -				
575	DECALS & SIGNAGE	ADA Priority Seat Decals--"PLEASE OFFER THESE SEATS TO THE ELDERLY AND PERSONS WITH DISABILITIES", White on Clear	1	Standard				
576	DECALS & SIGNAGE	Drivers Instructions & Warning--English, Black on White	1	Standard				
577	DECALS & SIGNAGE	Interior Rear Step Floor Decals--"WATCH YOUR STEP", White Lettering on Red Background	1	Standard				
578	DECALS & SIGNAGE	Interior Symbol Decals (3)--ISO Symbols, No Smoking/Eating/Drinking/Radio. White on Black	1	Standard				
579	DECALS & SIGNAGE	Vehicle Height Decal--English "Caution Clearance Height XX FT XX IN, Black on Yellow	1	Standard				
580	DECALS & SIGNAGE	Drivers /Passengers Standee Warning Decal for Florida--"It Is A Violation For This Bus To Be In Operation With Passengers Occupying The Area Forward Of Yellow Line. Therefore Passengers May Not Stand Forward Of The Yellow Line While Bus Is In Motion." White on Black	1	Standard				
581	DECALS & SIGNAGE	Wheelchair Securement Decals--"WHEELCHAIR SEATING AREA SECUREMENTS ARE LOCATED BELOW THESE SEATS", Black on Optically Clear	1	Standard				
582	DECALS & SIGNAGE	TrilingualDecals	1	Quote				
583	DECALS & SIGNAGE	Yield Sign Decal	1	Standard				
584	DECALS & SIGNAGE		1	\$ -				

Line Item	Description	Part #	QTY	Yr1	Yr2	Yr3	Yr 4	Yr5
585	DECALS & SIGNAGE		1	\$ -				
586	DECALS & SIGNAGE		1	\$ -				
587	DECALS & SIGNAGE		1	\$ -				
588	MANUALS	Drivers, Service, Parts, Electrical, Vendor (Hardcopy) & Compact Disc (CD)--1 Set Hardcopy & 1 CD (Up to 3 buses ordered)	1	Standard				
589	MANUALS	Additional Driver's Handbook--Each	1	\$ 80.00	PPI Pricing*	PPI Pricing*	PPI Pricing*	PPI Pricing*
590	MANUALS	Additional Service Manual (Hardcopy)--Each	1	\$ 200.00	PPI Pricing*	PPI Pricing*	PPI Pricing*	PPI Pricing*
591	MANUALS	Additional Parts Manual (Hardcopy)--Each	1	\$ 200.00	PPI Pricing*	PPI Pricing*	PPI Pricing*	PPI Pricing*
592	MANUALS	Additional Electrical Schematics (Hardcopy)--Each	1	\$ 75.00	PPI Pricing*	PPI Pricing*	PPI Pricing*	PPI Pricing*
593	MANUALS	Additional Drivers, Service, Parts, or Electrical Schematics (CD)--Each	1	\$ 50.00	PPI Pricing*	PPI Pricing*	PPI Pricing*	PPI Pricing*
594	MANUALS	Additional Vendor Manuals (Hardcopy)--Each	1	Included in item 590				
595	MANUALS	Additional Vendor Manuals (CD)--Each	1	Included in item 593				
596	MANUALS	Notes: BYD provides one set of printed manuals included in base price for each project	1	\$ -				
597	MANUALS		1	\$ -				
598	MANUALS		1	\$ -				
599	MANUALS		1	\$ -				
600	TRAINING	Operator Orientation Training--By Bus Manufacturer at Agency Property (Per Driver/Per Class)	1	\$ 40.00	PPI Pricing*	PPI Pricing*	PPI Pricing*	PPI Pricing*
601	TRAINING	Maintenance Orientation Training--By Bus Manufacturer at Agency Property (Per Technician/Per Class)	1	\$ 20.00	PPI Pricing*	PPI Pricing*	PPI Pricing*	PPI Pricing*
602	TRAINING	Steering System--By OEM Supplier at Agency Property (Per Technician/Per Class)	1	\$ 20.00	PPI Pricing*	PPI Pricing*	PPI Pricing*	PPI Pricing*
603	TRAINING	Chassis & Body--By OEM Supplier at Agency Property (Per Technician/Per Class)	1	\$ 20.00	PPI Pricing*	PPI Pricing*	PPI Pricing*	PPI Pricing*
604	TRAINING	Door Systems--By OEM Supplier at Agency Property (Per Technician/Per Class)	1	\$ 20.00	PPI Pricing*	PPI Pricing*	PPI Pricing*	PPI Pricing*
605	TRAINING	Suspension--By OEM Supplier at Agency Property (Per Technician/Per Class)	1	\$ 20.00	PPI Pricing*	PPI Pricing*	PPI Pricing*	PPI Pricing*
606	TRAINING	Electrical & Electronics---By Bus Manufacturer and/or OEM Supplier at Agency Property (Per Technician/Per Class)	1	\$ 20.00	PPI Pricing*	PPI Pricing*	PPI Pricing*	PPI Pricing*
607	TRAINING	Air & Brake Systems--By OEM Supplier at Agency Property (Per Technician/Per Class)	1	\$ 20.00	PPI Pricing*	PPI Pricing*	PPI Pricing*	PPI Pricing*
608	TRAINING	HVAC & Climate Controls--By OEM Supplier at Agency Property (Per Technician/Per Class)	1	\$ 20.00	PPI Pricing*	PPI Pricing*	PPI Pricing*	PPI Pricing*
609	TRAINING	Wheelchair Ramp--By OEM Supplier at Agency Property (Per Technician/Per Class)	1	\$ 20.00	PPI Pricing*	PPI Pricing*	PPI Pricing*	PPI Pricing*
610	TRAINING	Destination Sign--By OEM Supplier at Agency Property (Per Technician/Per Class)	1	\$ 20.00	PPI Pricing*	PPI Pricing*	PPI Pricing*	PPI Pricing*
611	TRAINING	Fire Suppression--By OEM Supplier at Agency Property (Per Technician/Per Class)	1	\$ 20.00	PPI Pricing*	PPI Pricing*	PPI Pricing*	PPI Pricing*
612	TRAINING	Camera System Training--By OEM Supplier at Agency Property (Per Technician/Per Class)	1	\$ 20.00	PPI Pricing*	PPI Pricing*	PPI Pricing*	PPI Pricing*
613	TRAINING	Automatic Passenger Counting System--By OEM Supplier at Agency Property (Per Technician/Per Class)	1	\$ 20.00	PPI Pricing*	PPI Pricing*	PPI Pricing*	PPI Pricing*
614	TRAINING	Fare Collection Training--By OEM Supplier at Agency Property (Per Technician/Per Class)	1	\$ 20.00	PPI Pricing*	PPI Pricing*	PPI Pricing*	PPI Pricing*
615	TRAINING	ITS Technical Training--By OEM Supplier at Agency Property (Per Technician/Per Class)	1	\$ 20.00	PPI Pricing*	PPI Pricing*	PPI Pricing*	PPI Pricing*
616	TRAINING	EV HV Battery ESS By OEM Supplier at Agency Property (Per Technician/Per Class)	1	\$ 20.00	PPI Pricing*	PPI Pricing*	PPI Pricing*	PPI Pricing*
617	TRAINING	EV Propulsion Operation & Diagnostics By OEM Supplier at Agency Property (Per Technician/Per Class)	1	\$ 20.00	PPI Pricing*	PPI Pricing*	PPI Pricing*	PPI Pricing*

Line Item	Description	Part #	QTY	Yr1	Yr2	Yr3	Yr 4	Yr5
618	TRAINING	High Voltage Safety By OEM Supplier at Agency Property (Per Technician/Per Class)	1	\$ 20.00	PPI Pricing*	PPI Pricing*	PPI Pricing*	PPI Pricing*
619	TRAINING		1					
620	TRAINING	Notes: 80 hours of BYD training are included in base bus price. Training price 200USD/HR, 10 trainee/class.	1	\$ -				
621	TRAINING		1					
622	TRAINING		1					
623	TRAINING		1					
624	TRAINING MODULES	Thermo-King Intelligaire Training Module	1	\$ 1,200.00	Quote	Quote	Quote	Quote
625	TRAINING MODULES	I/O Controls Multiplex Board	1	\$ 18,700.00	Quote	Quote	Quote	Quote
626	TRAINING MODULES	Air Brake Training Board	1	\$ 19,800.00	Quote	Quote	Quote	Quote
627	TRAINING MODULES	Vapor Door Training Module	1	Quote				
628	TRAINING MODULES		1					
629	TRAINING MODULES		1	\$ -				
630	BATTERY	Battery Lease	1 Yr	Quote				
631	BATTERY	See Battery Lease option in attachment	1 Yr					
632	BATTERY		1 Yr					
<b>TOTAL</b>				\$ 5,587,534.33	\$ 46,967.56	\$ 20,000.00	\$ -	\$ -
<b>PRICE OFFER</b>								
<b>TOTAL PRICE</b>								
						<b>TOTAL PRICE OFFER ----&gt;</b>	<b>\$</b>	<b>5,654,501.89</b>
<div> <div> NAME &amp; TITLE OF OFFEROR'S REPRESENTATIVE: </div> <div> <div> Patrick Duan, SVP of Operations </div> <div> (Name &amp; Title) </div> </div> <div> <div> BYD Coach and Bus LLC </div> <div> (Offeror's Name) </div> </div> </div> <div> <div> SIGNATURE &amp; DATE: </div> <div> <div>  </div> <div> (Signature of Offeror's Representative) </div> <div> 9/21/2021 </div> <div> Date </div> </div> </div>								

Row Labels	Sum of Yr1	Sum of Yr2	Sum of Yr3	Sum of Yr 4	Sum of Yr5
ADVERTISING FRAMES					
AIR SYSTEM					
AUTOMATIC PASSENGER COUNTER					
AXLES & SEALS					
BATTERIES	100	100	100	100	100
BIKE RACKS					
BRAKES					
COMMUNICATIONS SYSTEM					
Cost of (1) 30FT, low floor, all electric bus, per the specifications	100	100	100	100	100
Cost of (1) 35FT, low floor, all electric bus, per the specifications					
Cost of (1) 40FT, low floor, all electric bus, per the specifications					
Cost of (1) Depot Charger					
DECALS & SIGNAGE					
DESTINATION SIGN SOFTWARE					
DESTINATION SIGNS					
DOOR SYSTEM					
DOOR SYSTEM--FRONT					
DOOR SYSTEM--REAR					
DRIVER BARRIER					
DRIVER CONTROLS					
DRIVER HEATERS					
DRIVERS SEAT					
ELECTRICAL EQUIPMENT CABINET					
EXTERIOR LIGHTS					
EXTERIOR MIRRORS					
FARE COLLECTION					
FIRE SUPPRESSION SYSTEM					
FLOORING					
FRAME					
GAUGES--DRIVERS DASH					
HEATING/AIR CONDITIONING					
HUBOMETER					
INTERIOR LIGHTS					
INTERIOR MIRRORS					
ITS SYSTEM					
MANUALS					
MISCELLANEOUS					
MODESTY PANELS					
PAINT					
PASSENGER BARRIERS					
PASSENGER SEATING	100	100	100	100	100
PASSENGER SIGNALS					
PASSENGER WINDOWS					
PUBLIC ANNOUNCEMENT SYSTEM					
REAR RUN GAUGES					
ROOF HATCHES					
SAFETY EQUIPMENT					
SCHEDULE RACK					
STANCHIONS/GRAB RAILS					
STEEERING SYSTEM					
STEERING SYSTEM					
STYLING PACKAGES					
SURVEILLANCE CAMERA SYSTEMS					
TIRES					
TOWING					
TRAINING					
TRAINING MODULES					
WHEELCHAIR RAMP					
WHEELCHAIR SECUREMENT					
WHEELS/RIMS					
<b>Grand Total</b>	<b>300</b>	<b>300</b>	<b>300</b>	<b>300</b>	<b>300</b>

Cost by Description by Year						
Description	Year 1	Year 2	Year 3	Year 4	Year 5	Total
ADVERTISING FRAMES	441.4176	0	0	0	0	441.4176
AIR SYSTEM	260	0	0	0	0	260
AUTOMATIC PASSENGER COUNTER	32016.49	0	0	0	0	32016.49
AXLES & SEALS	43.2	0	0	0	0	43.2
BATTERIES	109.2	0	0	0	0	109.2
BIKE RACKS	15442.43	9534.26	0	0	0	24976.69
BRAKES	0	0	0	0	0	0
COMMUNICATIONS SYSTEM	4014.739	0	0	0	0	4014.739
Cost of (1) 30FT, low floor, all electric bus, per the specifications	0	0	0	0	0	0
Cost of (1) 35FT, low floor, all electric bus, per the specifications	750000	0	0	0	0	750000
Cost of (1) 40FT, low floor, all electric bus, per the specifications	730000	0	0	0	0	730000
Cost of (1) Depot Charger	289418.6	20000	20000	0	0	329418.6
DECALS & SIGNAGE	0	0	0	0	0	0
DESTINATION SIGN SOFTWARE	5812.1	0	0	0	0	5812.1
DESTINATION SIGNS	47263.4	0	0	0	0	47263.4
DOOR SYSTEM	4824.632	0	0	0	0	4824.632
DOOR SYSTEM--FRONT	0	0	0	0	0	0
DOOR SYSTEM--REAR	557.4	0	0	0	0	557.4
DRIVER BARRIER	0	0	0	0	0	0
DRIVER CONTROLS	20.8	0	0	0	0	20.8
DRIVER HEATERS	67.6	0	0	0	0	67.6
DRIVERS SEAT	9082.6	0	0	0	0	9082.6
ELECTRICAL EQUIPMENT CABINET	0	0	0	0	0	0
EXTERIOR LIGHTS	0	0	0	0	0	0
EXTERIOR MIRRORS	3120.024	0	0	0	0	3120.024
FARE COLLECTION	17498.3	17433.3	0	0	0	34931.6
FIRE SUPPRESSION SYSTEM	0	0	0	0	0	0
FLOORING	0	0	0	0	0	0
FRAME	0	0	0	0	0	0
GAUGES--DRIVERS DASH	0	0	0	0	0	0
HEATING/AIR CONDITIONING	25145	0	0	0	0	25145
HUBOMETER	1487.34	0	0	0	0	1487.34
INTERIOR LIGHTS	0	0	0	0	0	0
INTERIOR MIRRORS	62.685	0	0	0	0	62.685
ITS SYSTEM	95682.6	0	0	0	0	95682.6
MANUALS	605	0	0	0	0	605
MISCELLANEOUS	64.987	0	0	0	0	64.987
MODESTY PANELS	0	0	0	0	0	0
PAINT	0	0	0	0	0	0
PASSENGER BARRIERS	0	0	0	0	0	0
PASSENGER SEATING	33088.5	0	0	0	0	33088.5
PASSENGER SIGNALS	60	0	0	0	0	60
PASSENGER WINDOWS	653.4	0	0	0	0	653.4
PUBLIC ANNOUNCEMENT SYSTEM	11770.2	0	0	0	0	11770.2
REAR RUN GAUGES	0	0	0	0	0	0
ROOF HATCHES	0	0	0	0	0	0
SAFETY EQUIPMENT	288.12	0	0	0	0	288.12
SCHEDULE RACK	1071.8	0	0	0	0	1071.8
STANCHIONS/GRAB RAILS	0	0	0	0	0	0
STEERING SYSTEM	0	0	0	0	0	0
STEERING SYSTEM	0	0	0	0	0	0
STYLING PACKAGES	0	0	0	0	0	0
SURVEILLANCE CAMERA SYSTEMS	30461.11	0	0	0	0	30461.11
TIRES	5995	0	0	0	0	5995
TOWING	0	0	0	0	0	0
TRAINING	400	0	0	0	0	400
TRAINING MODULES	39700	0	0	0	0	39700
WHEELCHAIR RAMP	0	0	0	0	0	0
WHEELCHAIR SECUREMENT	20004.1	0	0	0	0	20004.1
WHEELS/RIMS	1401.6	0	0	0	0	1401.6
Total	2177934	46967.56	20000	0	0	2244902



**RFP #21-980369**

# FLORIDA ELECTRIC TRANSIT BUSES WITH CHARGING AND ASSOCIATED EQUIPMENT

**PINELLAS SUNCOAST TRANSIT AUTHORITY**

September 21, 2021



**SUBMITTED BY:**

BYD Coach & Bus LLC.  
1800 South Figueroa Street  
Los Angeles, CA 90015

**BYD CONTACT PERSONNEL:**

Patrick Duan, Senior VP of Operations  
P: 213.880.8597 E: [patrick.duan@byd.com](mailto:patrick.duan@byd.com)

John Hatch, Southeast Regional Sales Manager,  
P: 407.729.0406 E: [john.hatch@byd.com](mailto:john.hatch@byd.com)

Maria Mendoza, Director of Bids and Grants  
P: 213.356.3660 E: [maria.mendoza1@byd.com](mailto:maria.mendoza1@byd.com)

**SUBMITTED TO:**

Pinellas Suncoast Transit  
Authority  
Attn: Alvin R. Burns Jr., Director  
of Procurement  
3201 Scherer Drive  
St. Petersburg, FL 33716